

# Order form - select the correct Cover

☐

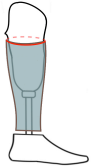
**Flex Neo Max BK**

☐

**XT  
COVER**

Patient Name (optional) : .....

Prosthetic socket circumference at the very end of the cover in [mm]



To take the measurement correctly, please mark the height of the cover in several places and place a ruler below the marking. The measurement should be made very carefully because moving the ruler even by a few millimetres up or down causes an incorrect reading of the circumference even by several centimetres.

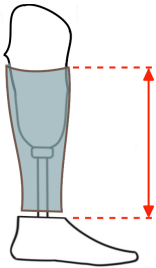


Should we make a hole for the PIN if there is one? ☐ No

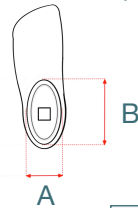
**3**

Height in [mm]

We measure from the level of the foot shell to the top of the knee. The gap between the cover and the foot will be taken by us, depending on the type of foot.



**1**



A [mm]

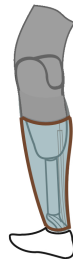
B [mm]

Foot manufacturer, type and size

For example : OB Taleo 1C50 L29

The silicone sleeve - option

Cover below the silicone sleeve or without ☐

☐


Cover over the silicone sleeve i.e. the sleeve is between the socket and the cover ☐

☐


Adapter

☐ 30

☐ 34

Matte and semi-matte colors - tattoos unavailable

☐ 25 ☐ 45 ☐ 65 ☐ 85

Shiny colors & matt varnish

☐ Skin1 ☐ Skin2 ☐ Skin3  
☐ Skin4 ☐ Graphite ☐ Black

☐ Matt varnish (charged extra)

Tattoo (charged extra)

Available only for Skin1, Skin2, Skin3, Skin4 color

☐ Catalog number  
np; 08-1001

☐ Own

e.g.:  
4WR95=3

Distributed by  **OrtoPed**  
www.ortoped.ca

**Nextit**  
FLEX COVERS

Check list :

☐

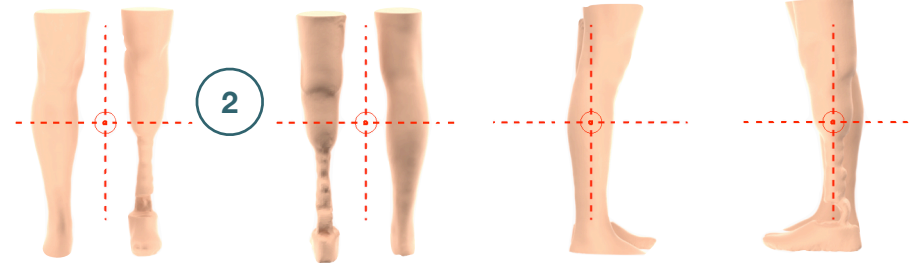
Photo of the foot or shell.

Both the outer and inner edges of the shell contour must be visible. The camera lens must be perpendicular to the pyramid.


☐

**4 Photos** The camera must be placed perpendicular to the legs, in a low position, and both legs must be centered on the photo. Please remember that all prosthetic components must be completely visible, including the socket. Please remove shoes, socks and any object that covers the prosthesis.

**Patients do not need to remove the socks from the healthy leg.**


☐

A scan of the patient's calf, possibly with a prosthesis.

☐

Scan of the entire prosthesis, without the patient.



Format: stl; obj

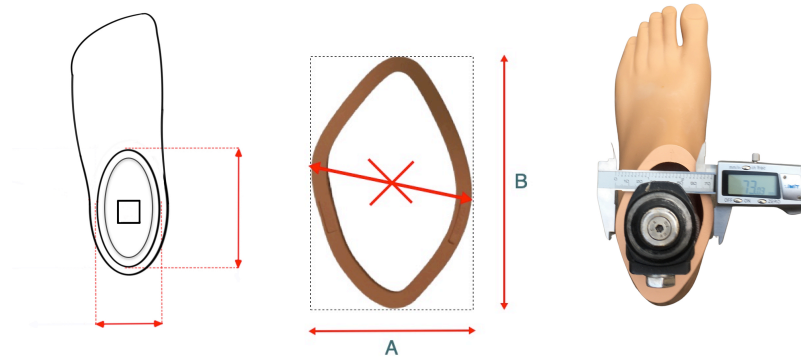


- All our covers can be shortened from the bottom by several mm.
- In the factory state, the lower part of the cover is flat.
- In the case of the foot as shown in the picture, the lower part of the cover can be ground to the shape of the foot.

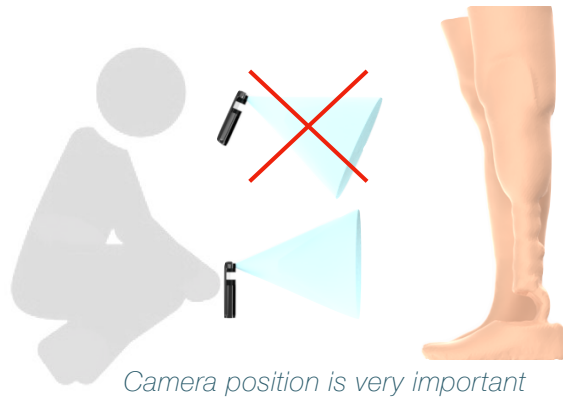
Send the form and files to **customorders@ortoped.ca** or use an external service such as **WeTransfer**

**VERY IMPORTANT information - do not send.**

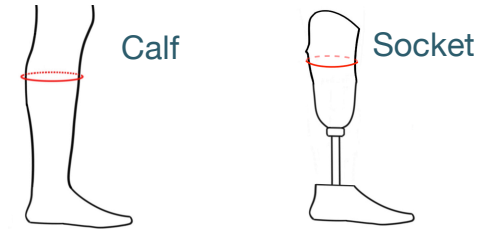
1



2



3



Calf < Socket

Calf > Socket

*If the circumference of the prosthetic socket at its widest point is similar to the calf circumference (or greater), the Cover height should be as low as possible. It is important to remember that placing the Cover on the socket increases its circumference and may not look good together with the healthy leg.*

**COLORS - do not send.**

Matte and semi-matte colors - tattoos unavailable



Shiny colors & matt varnish

